

**Phospho-OSR1(T310) Antibody**  
**Affinity Purified Rabbit Polyclonal Antibody (Pab)**  
**Catalog # AP3576a**

**Specification**

---

**Phospho-OSR1(T310) Antibody - Product Information**

Application	DB,E
Primary Accession	<a href="#">Q8TAX0</a>
Other Accession	<a href="#">O95747</a>
Reactivity	Human
Host	Rabbit
Clonality	Polyclonal
Isotype	Rabbit IgG
Calculated MW	29611

**Phospho-OSR1(T310) Antibody - Additional Information**

**Gene ID** 130497

**Other Names**

Protein odd-skipped-related 1, OSR1, ODD

**Target/Specificity**

This OSR1 Antibody is generated from rabbits immunized with a KLH conjugated synthetic phosphopeptide corresponding to amino acid residues surrounding T310 of human OSR1.

**Dilution**

DB~~1:500

E~~Use at an assay dependent concentration.

**Format**

Purified polyclonal antibody supplied in PBS with 0.09% (W/V) sodium azide. This antibody is purified through a protein A column, followed by peptide affinity purification.

**Storage**

Maintain refrigerated at 2-8°C for up to 2 weeks. For long term storage store at -20°C in small aliquots to prevent freeze-thaw cycles.

**Precautions**

Phospho-OSR1(T310) Antibody is for research use only and not for use in diagnostic or therapeutic procedures.

**Phospho-OSR1(T310) Antibody - Protein Information**

**Name** OSR1

**Synonyms** ODD

**Function** Transcription factor that plays a role in the regulation of embryonic heart and urogenital development.

**Cellular Location**

Nucleus.

**Tissue Location**

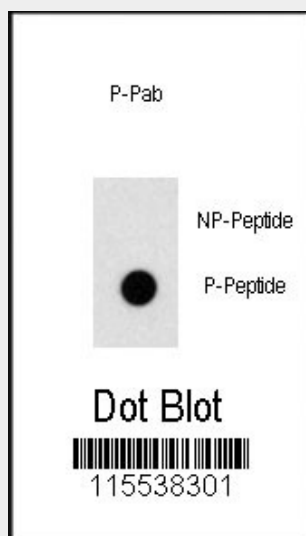
Expressed in adult colon, small intestine, prostate, testis, and fetal lung.

**Phospho-OSR1(T310) Antibody - Protocols**

Provided below are standard protocols that you may find useful for product applications.

- [Western Blot](#)
- [Blocking Peptides](#)
- [Dot Blot](#)
- [Immunohistochemistry](#)
- [Immunofluorescence](#)
- [Immunoprecipitation](#)
- [Flow Cytometry](#)
- [Cell Culture](#)

**Phospho-OSR1(T310) Antibody - Images**



Dot blot analysis of anti-Phospho-OSR1-pT310 Antibody (Cat.#AP3576a) on nitrocellulose membrane. 50ng of Phospho-peptide or Non Phospho-peptide per dot were adsorbed. Antibody working concentrations are 0.5ug per ml.

**Phospho-OSR1(T310) Antibody - Background**

Odd-skipped related I (Odd1) is a zinc finger protein homologous to the Drosophila Odd-skipped class transcription factors that play critical roles in embryonic patterning and tissue morphogenesis.

**Phospho-OSR1(T310) Antibody - References**

Richardson,C., J. Cell. Sci. 121 (PT 5), 675-684 (2008)  
Coulter,D.E., EMBO J. 9 (11), 3795-3804 (1990)